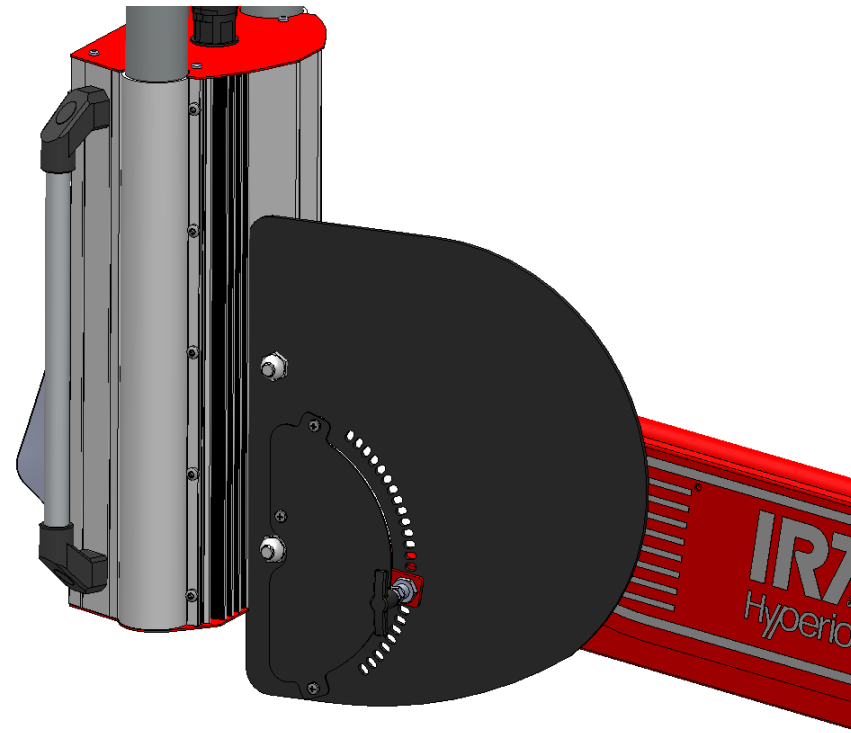


Assembly instruction for locking mechanism



1. Remove protection plates (2pcs.) (see pic A)
2. Raise the arms to their maximum upper position, this to unload the gas strut. This is important! The gas strut can otherwise unload it's power with risk of injury.
3. Secure the arms in their upper position and then remove the gas strut. Observe the arms can be heavy if cassettes are mounted.
4. Remove caps, nuts and washers on the parallell arm. (see pic B)
5. Remove one bolt at the time and replace it with a longer bolt (M12x70). When both bolts are changed, make step 1-3 in reverse order.
6. Drill 2 holes $\varnothing 6,5\text{mm}$ according to measures in the lower parallell arm. (see pic C)
7. Mount the locking arm with M6 bolts, washers and nuts. The big washers should be on the nut side. Also mount the distance plate. (see pic D)
8. Mount the plate with the positioning holes(see pic E). If necessary, remove the bottom plate of the control unit and mount the one attached in the package (See black arrow pic G.)
9. Mount the nuts which where removed in step 4. Don't use washers (see pic B)
10. Mount the protection plate with 3 screws. Observe that there should be a distance on each screw. (See pic F)
11. Mount the locking pin with the locking nut. (see pic G)

