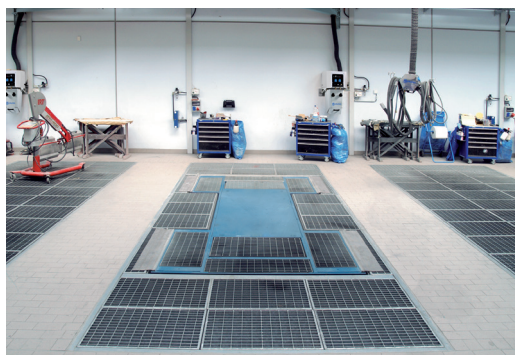




HERKULES HLS 1200 BY HEDSON

Ergonomic lifts with superior compact construction to meet the high demands in the workshop



HEDSON

— PERFORMANCE ABOVE ALL —

SIMPLIFIES AND IMPROVES THE QUALITY

The perfect lift for all types of body and paint shops

The lifting and lowering of the working height is done safe and smoothly with a Herkules HLS 1200 by Hedson and increases the access to damaged areas and the ergonomic work process.

In the workshop it is important that the environment is clean and explosion proof. All Herkules by Hedson lifts uses pneumatic lifting technology, which means they are driven by compressed air, no electrical connection is required. In the workshops air supply is common and uses for a clean, dependable and almost maintenance-free operation.

Nearly 85 % of all car damages require the worker to work in a stooped position. This causes fatigue and can also lead to long-term health problems. With a lift the work can be done in an ergonomically correct upright position, which also increase the work efficiency and improve the quality by better visual control opportunities.

TECHNICAL DATA	
Loading capacity	2,5 tons
Air supply	6 bar
Weight	700 kg
Lifting height	930 mm
Working height	
- HLS 1200-11	~1100 mm
- HLS 1200-13	~1100 mm
- HLS 1200-14	~1000 mm
Object height only	
- HLS 1200-11	110 mm
- HLS 1200-13	135 mm
- HLS 1200-14	110 mm
Pit depth	
- HLS 1200-14	115 mm

- Stepless lifting heights
- Due to low construction height easy to drive on
- Simple access to interim drive over ramps and deviate loading ramps
- On-ground, flush mounted or rail transport installations



ON-GROUND

Simply fix with screws and dowels, and the lift is ready for immediate use.



FLUSH MOUNTED

Flush mounted to concrete or grids.



RAIL TRANSPORT

Lift for rail transport.

Pit measurements on demand.

