

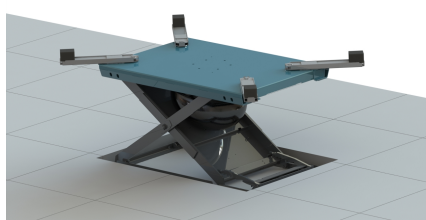


## HERKULES LIFTING

### **Herkules HM 1200-04 - in-ground**

The Herkules HM 1200-04 is suitable for installation in concrete or grids. The lift is equipped with swivel arms which easily reach the vehicles' original lifting points. The radius of the swivel arms also allows for a safe fixing of wide vehicles.

- 2.8 tons lifting capacity
- Fast lifting
- Small space requirements
- Flush mounted installations



### **HIGH CAPACITY AND SPACE SAVING**

The lifting and lowering of the working height is done safely and smoothly with a Herkules HM 1200 and increases the access to damaged areas and the ergonomic work process with loading capacity up to 2,8 tons.

This lift is available for in-ground installation in concrete or grids.

---

## TECHNICAL SPECIFICATION

---

Artikel No.	HM1200-04
Lifting capacity	2,8 t
Lifting height	825 mm
Overdrive height	46 mm
Pit depth	115 mm