



PowerCure special version XL.

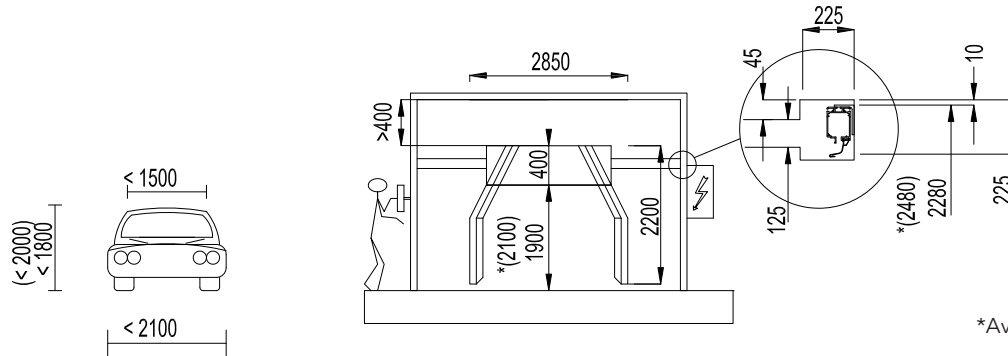
## POWERCURE

### Controlled infrared arch configuration that saves energy, time and space

PowerCure cures completely from inside out. The car can be processed further immediately with improved throughput as a result. The front and backs are reached with angled wings. PowerCure detects the starting position and saves energy by only activating the necessary IR lamps.

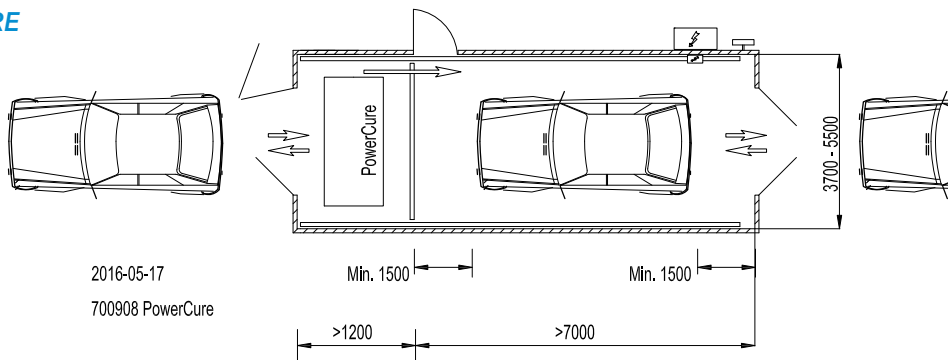
- Save space and improve throughput, ready to move forward in minutes
- Hassle free operation with more than 20,000 operating hours per lamp
- All standard zones pre-programmed
- No pre-heating of emitters necessary
- Integrated laser sensors for exact positioning
- Integrated ventilation systems

## DIMENSIONS

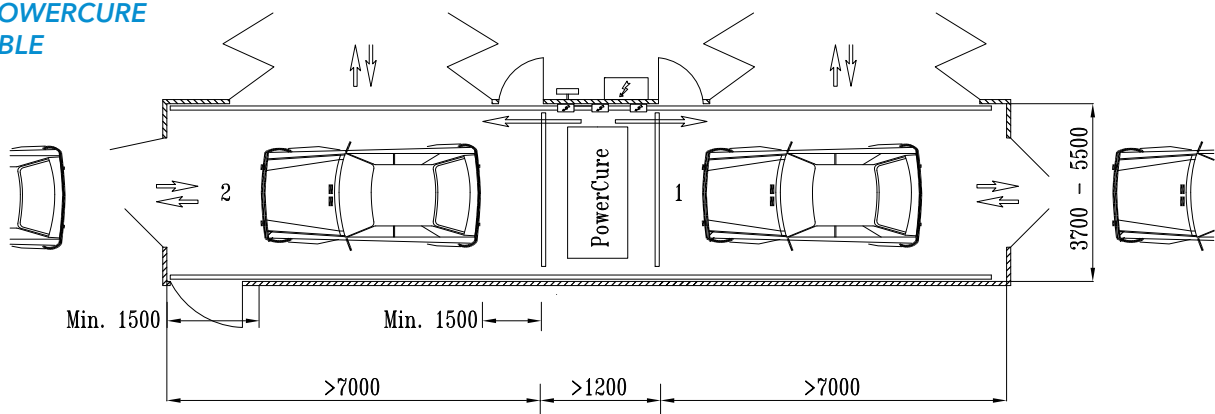


\*Available height option

### IRT POWERCURE SINGLE



### IRT POWERCURE DOUBLE



TECHNICAL DATA		
Installed power	54 kW / 63 A (20 lamps à 3 kW less 6 kW supply voltage compensation)	
Voltage	400 V, 3 Ph ~/PE	
Frequency	50-60 Hz	
CURING TIMES		
<i>Medium-sized vehicles</i>		
	Base coat (approx.)	Clear coat (approx.)
<b>Bonnet</b>	4 min	7 min
<b>Door</b>	3 min	5 min



Selection of panels and paint type is done quickly and easily on the touch control panels with user friendly graphics and self-instructive menus.